



PUBLIC NOTICE

2023 Floating Aquatic Vegetation Control Program



E. crassipes

The California Department of Parks and Recreation Division of Boating and Waterways will be conducting herbicide treatments and mechanical harvesting to control **water hyacinth** (*Eichhornia crassipes*), **South American spongeplant** (*Limnobium laevigatum*), **Uruguay water primrose** (*Ludwigia hexapetala*), and **alligator weed** (*Alternanthera philoxeroides*) in the Sacramento-San Joaquin Delta region.

The following information is subject to change based on governmental requirements, weather conditions, plant growth and movement, waterway traffic, special status species surveys, presence of sensitive crops in adjacent lands, and other conditions.



A. philoxeroides

Proposed Herbicide Treatment Period

All Sites: March 1, 2023 – November 30, 2023

Potential Treatment Areas

Initially in and/or around, but not limited to the following areas: San Joaquin River, Old River, Middle River, Salt Slough, Mendota Pool, and Fresno Slough. See [Figure 1](#) below for potential early treatment sites.

Herbicides Being Applied

Glyphosate, 2,4-D, Imazamox, or Diquat
(Herbicides are registered for aquatic use with US Environmental Protection Agency and the California Department of Pesticide Regulation)



L. hexapetala

Mechanical Harvesting

Potential Harvesting Dates:

March 2023 - April 2023 and July 2023- December 2023

Potential Mechanical Harvesting Control Areas: Select areas of the Delta with high infestations or coverage of water hyacinth. See [Figure 2](#) below for potential mechanical harvesting control areas.

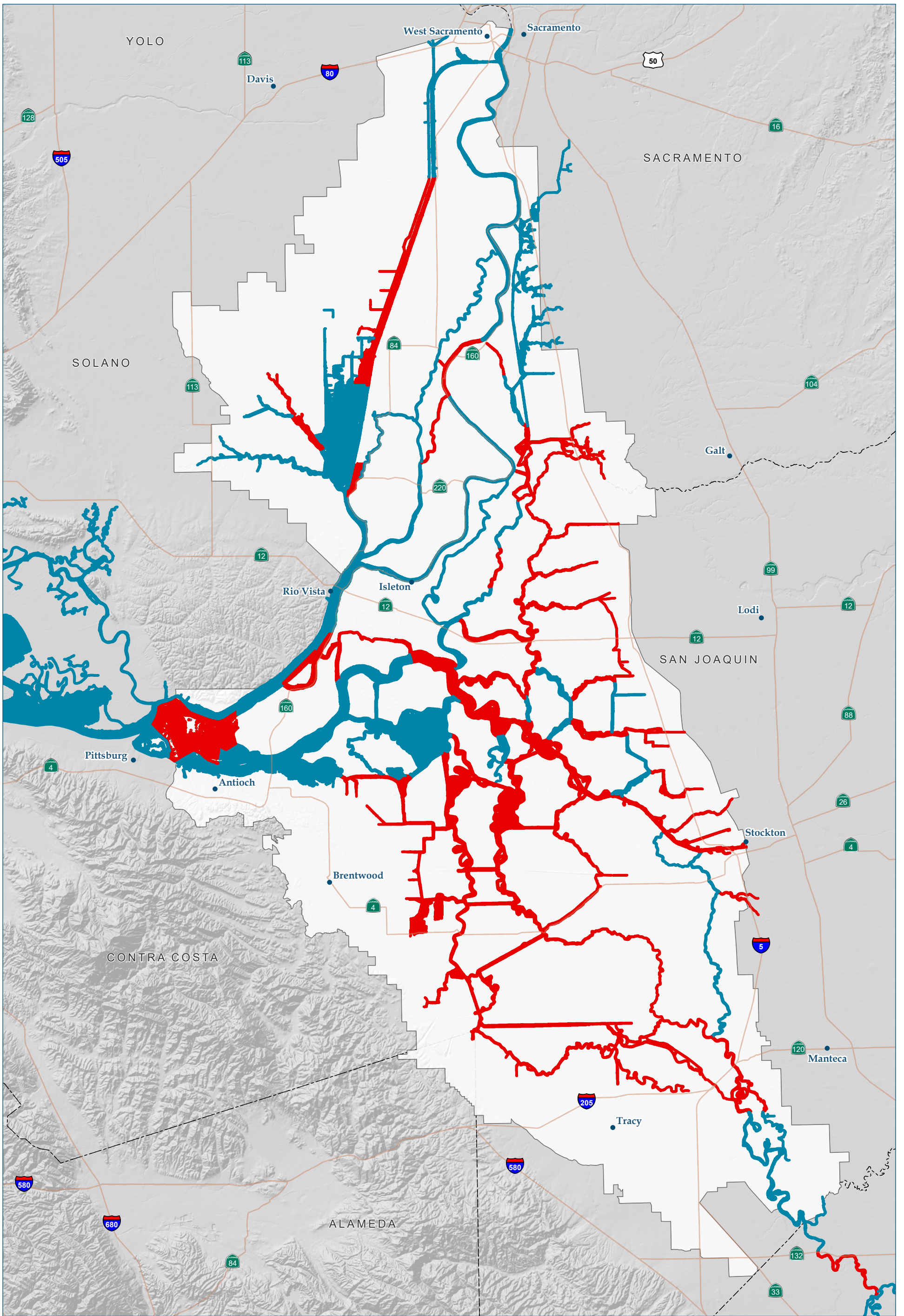
Precautions

The public should not gather on or near boat docks during treatment applications. Boaters, swimmers, fisherman and other recreationists in an area being immediately treated are urged to heed directives by herbicide technicians, as they are aimed at protecting public safety.



L. laevigatum

Contact Information for more information regarding the control program, please see DBW's website at www.dbw.parks.ca.gov, call 888-326-2822, or email at AIS@parks.ca.gov.

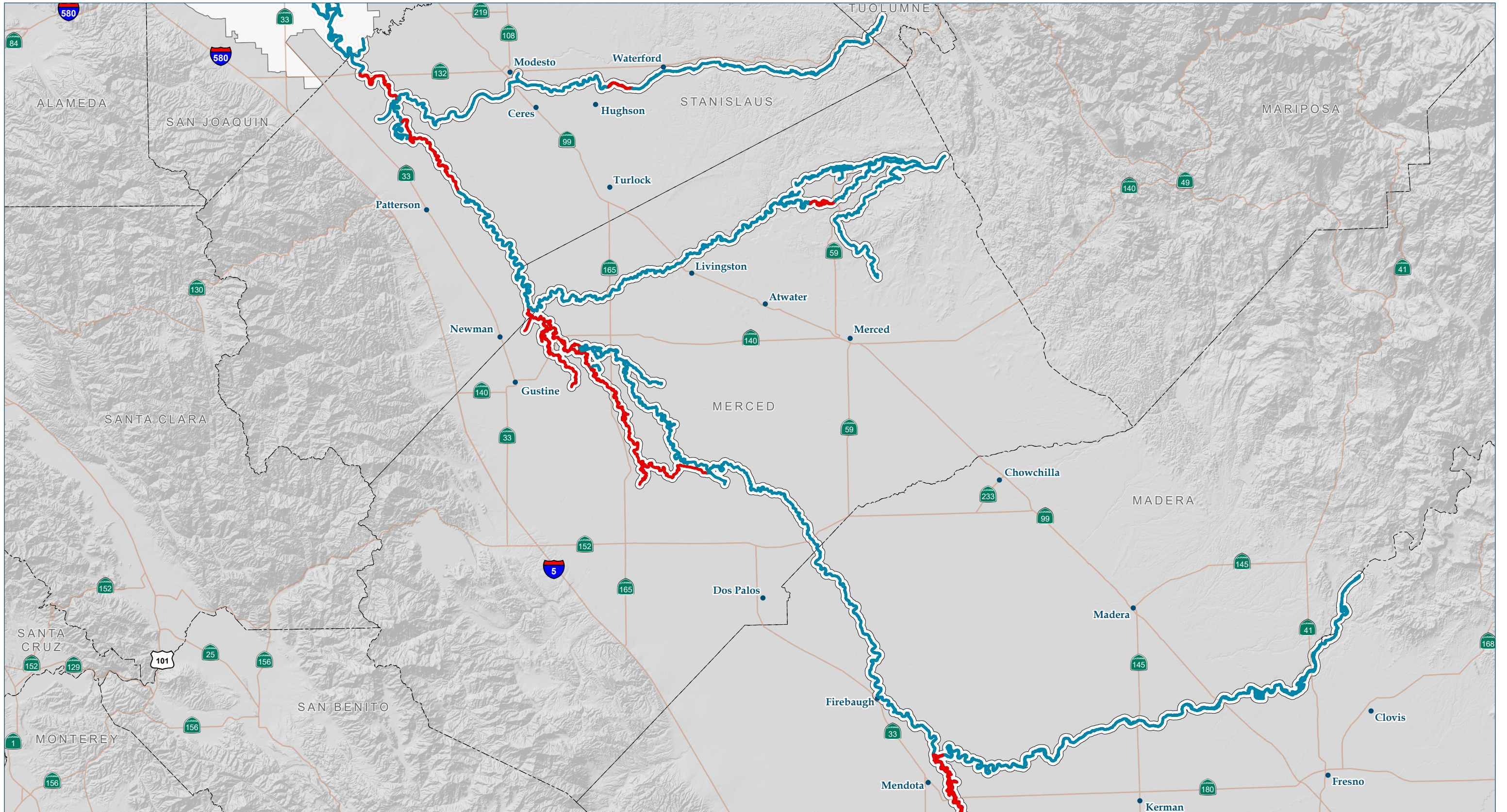


- Priority Sites
- DBW Sites

Aquatic Invasive Plant Control Program (AIPCP) 2023 FAV Potential Priority Treatment Sites Northern Sites

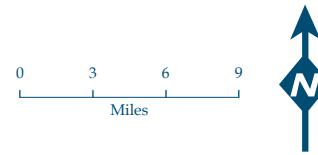


Unpublished work ©2022 California State Parks, all rights reserved. For permission, contact PubInfo@parks.ca.gov. All materials contained herein are protected by the United States Copyright Law and may not be reproduced, shared, sold, distributed, transmitted, displayed, repackaged, published or otherwise transferred without the prior written permission of California State Parks. You may not alter or remove any trademark, copyright or other notice from copies of the content. This material is provided for your personal, non-commercial use only. Data Disclaimer - Every reasonable effort has been made to assure the accuracy of the data provided, however, California State Parks and its employees and agents disclaim any and all responsibility from or relating to any results obtained in its use. The GIS database and data in the product is subject to constant change and the accuracy and completeness cannot be and is not guaranteed. CALIFORNIA STATE PARKS MAKES NO WARRANTIES OR GUARANTEES, EITHER EXPRESSED OR IMPLIED AS TO THE COMPLETENESS, ACCURACY, OR CORRECTNESS OF SUCH PRODUCT, NOR ACCEPTS ANY LIABILITY, ARISING FROM ANY INCORRECT, INCOMPLETE OR MISLEADING INFORMATION CONTAINED THEREIN. 1/20/2022 2023_FAV_PrioritizationMap_11x17_Northern J.Martinez, M.Kwong



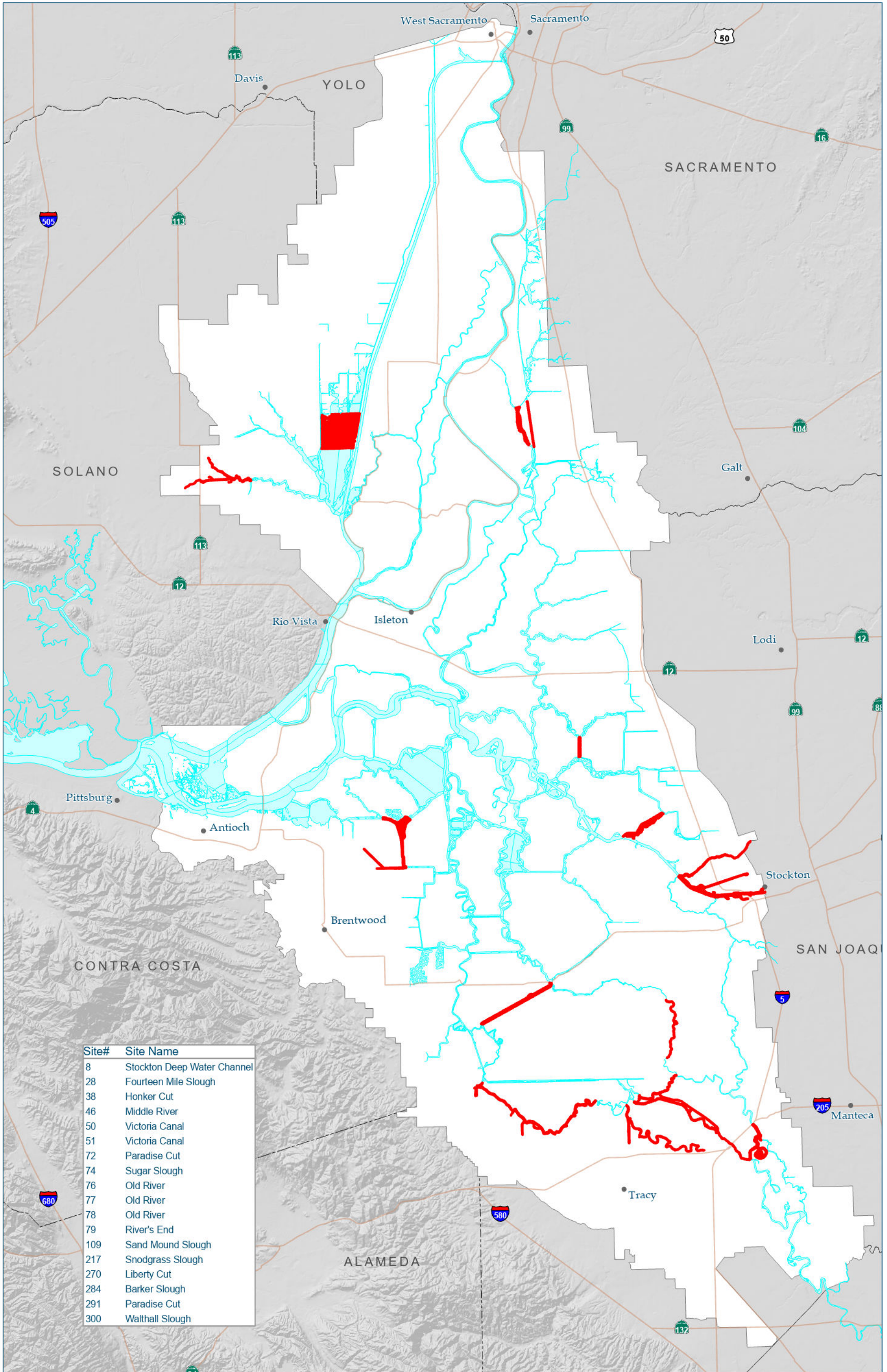
- Priority Sites
- DBW Sites

Aquatic Invasive Plant Control Program (AIPCP) 2023 FAV Potential Priority Treatment Sites Southern Sites



Unpublished work ©2022 California State Parks, all rights reserved. For permission, contact PubInfo@parks.ca.gov. All materials contained herein are protected by the United States Copyright Law and may not be reproduced, shared, sold, distributed, transmitted, displayed, repackaged, published or otherwise transferred without the prior written permission of California State Parks. You may not alter or remove any trademark, copyright or other notice from copies of the content. This material is provided for your personal, non-commercial use only. Data Disclaimer - Every reasonable effort has been made to assure the accuracy of the data provided, however, California State Parks and its employees and agents disclaim any and all responsibility from or relating to any results obtained in its use. The GIS database and data in the product is subject to constant change and the accuracy and completeness cannot be and is not guaranteed. CALIFORNIA STATE PARKS MAKES NO WARRANTIES OR GUARANTEES, EITHER EXPRESSED OR IMPLIED AS TO THE COMPLETENESS, ACCURACY, OR CORRECTNESS OF SUCH PRODUCT, NOR ACCEPTS ANY LIABILITY, ARISING FROM ANY INCORRECT, INCOMPLETE OR MISLEADING INFORMATION CONTAINED THEREIN.

1/20/2023 2023_FAV_PrioritizationMap_17x11_Southern J.Martinez

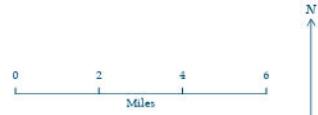


Site#	Site Name
8	Stockton Deep Water Channel
28	Fourteen Mile Slough
38	Honker Cut
46	Middle River
50	Victoria Canal
51	Victoria Canal
72	Paradise Cut
74	Sugar Slough
76	Old River
77	Old River
78	Old River
79	River's End
109	Sand Mound Slough
217	Snodgrass Slough
270	Liberty Cut
284	Barker Slough
291	Paradise Cut
300	Walthall Slough

Aquatic Invasive Plant Control Program (AIPCP)
Potential Floating Aquatic Vegetation
Mechanical Harvesting Sites for 2023



- Potential Mechanical Harvesting Sites
- Waterways
- Legal Delta Boundary
- County Boundaries
- Highways
- Cities



Unpublished work ©2020 California State Parks, all rights reserved. For permission, contact PubInfo@parks.ca.gov. All materials contained herein are protected by the United States Copyright Law and may not be reproduced, shared, sold, distributed, transmitted, displayed, repackaged, published or otherwise transferred without the prior written permission of California State Parks. You may not alter or remove any trademark, copyright or other notice from copies of the content. This material is provided for your personal, non-commercial use only. Data Disclaimer - Every reasonable effort has been made to assure the accuracy of the data provided, however, California State Parks and its employees and agents disclaim any and all responsibility for or relating to any results obtained in its use. The GIS database and data in the product is subject to constant change and the accuracy and completeness cannot be and is not guaranteed. CALIFORNIA STATE PARKS MAKES NO WARRANTIES OR GUARANTEES, EITHER EXPRESSED OR IMPLIED AS TO THE COMPLETENESS, ACCURACY, OR CORRECTNESS OF SUCH PRODUCT, NOR ACCEPTS ANY LIABILITY, ARISING FROM ANY INCORRECT, INCOMPLETE OR MISLEADING INFORMATION CONTAINED THEREIN.